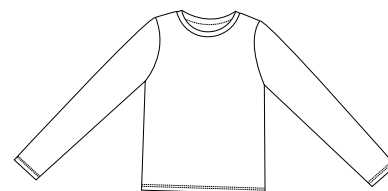
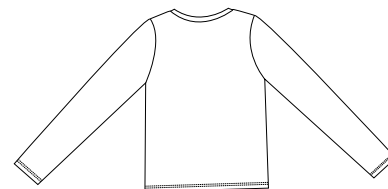


Ladies Long Sleeve District Tee



Front



Back






DT201

- * 3.69-ounce * 100% ring spun combed cotton * 40-singles * Preshrunk * Colorfast
- * Modern feminine cut

Care Instructions:
Machine wash cold, wash inside out, wash with like colors. Do not bleach. Tumble dry low. Warm iron if necessary.

Finished Measurements in Inches							
Size	S	M	L	XL	XXL	Plus 1X	Plus 2X
Chest	15.25	16	16.75	17.5	18	19.5	20.5
Body	23.75	24.5	25.5	26	26.5	27	27
Sleeve	24.75	25.75	26.75	27.75	27.75	27.75	27.75

Chest width measured 1" below armhole. Body length measured from high point shoulder to hem. Sleeve length measured from high point shoulder to hem.

Colors	
	Brilliant Red
	Deep Navy
	Denim
	Fatigue
	Midnight Black
	White

Please Note:
Colors shown are approximate and for reference only. For closest match see PMS colors, or for exact match, returnable samples and grommited samples are available.

Color Chart							
Colors	Brilliant Red	Chocolate Brown	Deep Navy	Denim	Fatigue	Midnight Black	White
Textile PMS	19-1664TC	19-1015 TC	19-4104 TC	No Match	17-0220 TC	19-4305 TC	11-4201TC
General PMS	186C	440 C	432 C	No Match	8321 C	Process Black	663 C